

New Providence **September 2011** Market Activity

The average Realtor sells a home every 73* days. I sell one every **6** days. Call me today to find out how I can do that for you.

Want to know what your home is worth? Visit www.Migginshousevalues.com

Address	Style	Rooms	Bedrooms	Baths	List Price	Sales Price	Assessment	LP:SP	SP:AV	DOM
35 Crescent Drive	CapeCod	7	4	2.0	\$399,000	\$320,000	\$209,700	80.20%	152.60%	332
101 The Fellsway	CapeCod	7	4	2.0	\$425,000	\$426,500	\$229,600	100.35%	185.76%	17
63 Clinton Avenue	Colonial	7	3	1.0	\$459,000	\$465,000	\$217,700	101.31%	213.60%	9
41 Maple Street	CapeCod	9	4	2.0	\$479,900	\$465,000	\$226,300	96.90%	205.48%	21
24 Pitney Avenue	Bi-Level	8	3	2.1	\$615,000	\$550,000	\$281,600	89.43%	195.31%	122
36 Fairview Avenue	Colonial	10	5	2.1	\$625,000	\$630,000	\$259,000	100.80%	243.24%	6
26 Murray Hill Square	TwnEndUn	7	3	2.1	\$699,000	\$691,500	\$331,900	98.93%	208.35%	97
95 Overhill Road	Colonial	8	4	3.1	\$825,000	\$765,000	\$406,200	92.73%	188.33%	65
199 Union Avenue	Colonial	9	4	3.1	\$865,000	\$805,000	\$367,700	93.06%	218.93%	68
20 Kline Place South	Colonial	11	4	3.1	\$899,000	\$791,250	\$360,100	88.01%	219.73%	174
AVERAGES					\$629,090	\$590,925		94.17%	203.13%	91

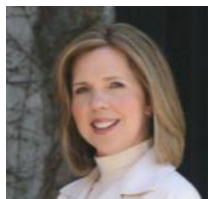
Average Days on Market	91
Average List Price	\$629,090
Average Sales Price	\$590,925
% of List Price to Sales Price	94.17
Sales Price to Assessed Value Ratio	203.13%
# of Sold Homes for the Month	10



Margaret "Maggee" Miggins
Broker Associate

The Miggins Group

973.376.8990 - Direct
973.879.9711 - Cell
973.376.0033 x309 -Office
maggee@migginsrealestate.com
www.MigginsRealEstate.com



"Relax...You're with Maggee"

Information compiled from the Garden State Multiple Listing Service. Deemed Reliable but not Guaranteed

If you are currently listed with another broker please do not consider this a solicitation of your home.

*The average number of homes Realtors sold was provided by a NAR 2009 report