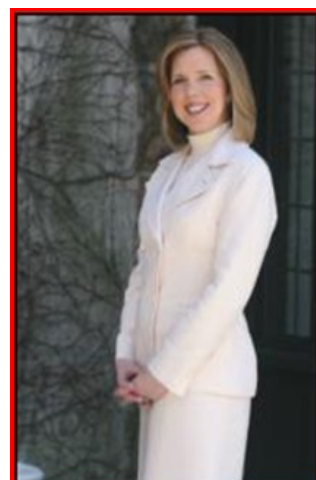




Bloomfield **May 2010** Market Activity

| Units | Address | Style | List Price | Sales Price | Total Assess | Close Date | DOM | LP: SP | SP:AV |
|-----------------|------------------------------|----------|-----------------|-----------------|--------------|------------|-----------|---------------|-------------|
| 1 | 90 Willow Street | HalfDupl | \$110000 | \$116600 | \$71,200 | 5/14/2010 | 313 | 106% | 1.64 |
| 2 | 292 Hoover Avenue Unit 7 | FirstFlr | \$159000 | \$157000 | \$65,000 | 5/27/2010 | 20 | 98.74% | 2.42 |
| 3 | 55 Park Avenue | OneFloor | \$159900 | \$157000 | \$52,800 | 5/26/2010 | 140 | 98.19% | 2.97 |
| 4 | 125 N Seventeenth Street | Colonial | \$159900 | \$145000 | \$115,000 | 5/14/2010 | 51 | 90.68% | 1.26 |
| 5 | 237 N 17Th Street | Duplex | \$189000 | \$165000 | \$89,200 | 5/17/2010 | 198 | 87.30% | 1.85 |
| 6 | 306 Hoover Avenue Unit 44 | OneFloor | \$209500 | \$205000 | \$76,000 | 5/27/2010 | 73 | 97.85% | 2.7 |
| 7 | 29 Maolis Avenue | Colonial | \$220000 | \$223500 | \$129,700 | 5/26/2010 | 25 | 101.59% | 1.72 |
| 8 | 17 Willard Avenue | Colonial | \$249900 | \$199000 | \$144,400 | 5/24/2010 | 177 | 79.63% | 1.38 |
| 9 | 45 Day Street | Colonial | \$250000 | \$230000 | \$145,300 | 5/7/2010 | 80 | 92% | 1.58 |
| 10 | 44 Mountain Avenue | Colonial | \$254500 | \$257000 | \$150,200 | 5/28/2010 | 10 | 100.98% | 1.71 |
| 11 | 110 Orange Street Unit 5 | OneFloor | \$259900 | \$230000 | \$53,000 | 5/21/2010 | 179 | 88.50% | 4.34 |
| 12 | 20 Broughton Avenue | CapeCod | \$276500 | \$277000 | \$126,500 | 5/14/2010 | 10 | 100.18% | 2.19 |
| 13 | 83 Clinton Street | Colonial | \$279000 | \$265000 | \$136,200 | 5/26/2010 | 31 | 94.98% | 1.95 |
| 14 | 16 Maolis Avenue | Colonial | \$289000 | \$266000 | \$119,200 | 5/26/2010 | 17 | 92.04% | 2.23 |
| 15 | 57 Lindbergh Boulevard | Colonial | \$299000 | \$303000 | \$157,400 | 5/21/2010 | 143 | 101.34% | 1.93 |
| 16 | 102 Montgomery Street Unit 9 | TwnIntUn | \$309000 | \$305000 | \$0 | 5/27/2010 | 27 | 98.71% | 0 |
| 17 | 64-66 Newark Avenue | Colonial | \$319900 | \$300000 | \$126,500 | 5/14/2010 | 93 | 93.78% | 2.37 |
| 18 | 111 Mill Street | AFrame | \$329988 | \$317000 | \$126,100 | 5/21/2010 | 20 | 96.06% | 2.51 |
| 19 | 102 Montgomery Street | TwnIntUn | \$339900 | \$310000 | \$0 | 5/19/2010 | 485 | 91.20% | 0 |
| 20 | 173 Whittle Avenue | Colonial | \$357000 | \$346000 | \$155,200 | 5/20/2010 | 69 | 96.92% | 2.23 |
| 21 | 49 Comley Place | Colonial | \$399000 | \$430000 | \$141,200 | 5/27/2010 | 22 | 107.77% | 3.05 |
| 22 | 100 Ernst Avenue | Colonial | \$410000 | \$420000 | \$175,300 | 5/25/2010 | 26 | 102.44% | 2.4 |
| 23 | 16 Cambridge Road | CapeCod | \$489000 | \$489000 | \$207,200 | 5/12/2010 | 17 | 100% | 2.36 |
| AVERAGES | | | \$274734 | \$265786 | | | 96 | 96.74% | 2.03 |



The Maggee Miggin's Group
 973.376.8990-office
 973.879.9711-cell
maggee@migginsrealestate.com
www.maplewoodhousevalues.com
"Relax...You're with Maggee"

| | |
|--|------------------|
| Average Days on Market | 96 |
| Average List Price | \$274,734 |
| Average Sales Price | \$265,786 |
| % of List Price to Sales Price | 96.74% |
| Sales Price to Assessed Value Ratio | 2.03 |
| # of Units for the Month | 23 |