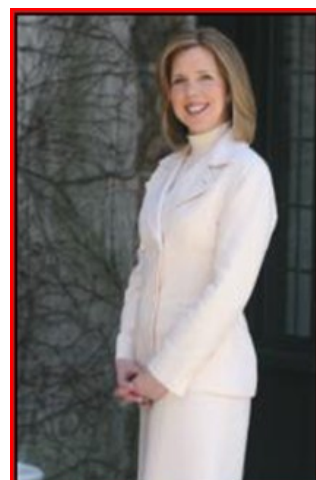




Maplewood **April 2010** Market Activity

Units	Address	Style	List Price	Sales Price	Total Assess	Close Date	DOM	LP:SP	SP:AV
1	465 Valley Street	HighRise	\$152500	\$144000	\$71200	4/29/2010	14	94.42%	2.02
2	267A Elmwood Avenue	TwnEndUn	\$219000	\$212000	\$83500	4/6/2010	30	96.80%	2.54
3	120 Jacoby Street	Colonial	\$229000	\$225000	\$138000	4/21/2010	129	98.25%	1.63
4	736 Irvington Avenue	RanchExp	\$239000	\$225000	\$154200	4/20/2010	30	94.14%	1.46
5	52 Hillcrest Road	Colonial	\$245000	\$255000	\$166100	4/6/2010	48	104.08%	1.54
6	26-30 Princeton Street	Colonial	\$325000	\$335000	\$136400	4/26/2010	12	103.07%	2.46
7	12 Briarcliff Court	Colonial	\$329900	\$320000	\$189300	4/2/2010	38	96.99%	1.69
8	6 Rutgers Street	Colonial	\$338100	\$338150	\$296000	4/8/2010	92	100.01%	1.14
9	10 Briarcliff Court	Colonial	\$339000	\$310000	\$196400	4/30/2010	52	91.45%	1.58
10	7 Wellesley Road	Colonial	\$365000	\$337500	\$231200	4/21/2010	39	92.47%	1.46
11	8 Wetmore Avenue	Colonial	\$399900	\$390000	\$305800	4/21/2010	17	97.52%	1.28
12	176-178 Wyoming Avenue	Tudor	\$450000	\$400000	\$616600	4/27/2010	50	88.89%	0.65
13	148 Hilton Avenue	Colonial	\$479000	\$465000	\$163700	4/19/2010	39	97.08%	2.84
14	506 Ridgewood Road	Colonial	\$500000	\$522000	\$340100	4/19/2010	11	104.40%	1.53
15	47 Highland Avenue	Colonial	\$525000	\$520000	\$332800	4/28/2010	44	99.05%	1.56
16	22 Jefferson Avenue	Colonial	\$525000	\$537000	\$418600	4/19/2010	221	102.29%	1.28
17	160 Oakland Road	Colonial	\$549900	\$569620	\$354200	4/16/2010	15	103.59%	1.61
18	6 Bowdoin Street	Colonial	\$569900	\$560000	\$322300	4/2/2010	43	98.26%	1.74
19	17 Norfolk Avenue	Colonial	\$579000	\$595000	\$342900	4/9/2010	21	102.76%	1.74
20	26 Oberlin Street	Colonial	\$579000	\$569000	\$337300	4/27/2010	60	98.27%	1.69
21	449 Walton Road	Tudor	\$659000	\$650000	\$415500	4/12/2010	15	98.63%	1.56
22	13 Ridgewood Terrace	Colonial	\$759000	\$727000	\$378800	4/2/2010	27	95.78%	1.92
23	30 Hickory Drive	Colonial	\$799000	\$780000	\$494000	4/30/2010	106	97.62%	1.58
AVERAGES			\$441530	\$434185			50	98.33%	1.67



The Maggee Miggin's Group
 973.376.8990-office
 973.879.9711-cell
maggee@migginsrealestate.com
www.maplewoodhousevalues.com
"Relax...You're with Maggee"

Average Days on Market	50
Average List Price	\$441,530
Average Sales Price	\$434,185
% of List Price to Sales Price	98.33%
Sales Price to Assessed Value Ratio	1.67
# of Units for the Month	23