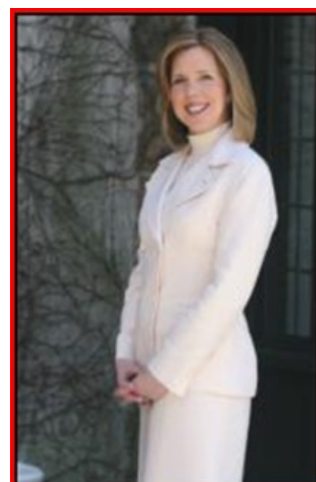




## Maplewood **June 2010** Market Activity

Units	Address	Style	List Price	Sales Price	Total Assess	Close Date	DOM	LP:SP	SP:AV
1	465-73 Valley Street	OneFloor	\$95000	\$92000	\$48100	6/29/2010	86	96.84%	1.91
2	724 Valley Street	Colonial	\$239900	\$200000	\$183100	6/7/2010	18	83.37%	1.09
3	2 Hillcrest Road	CapeCod	\$240000	\$240000	\$145200	6/8/2010	67	100%	1.65
4	24 Revere Avenue	Colonial	\$284000	\$276500	\$127000	6/28/2010	23	97.36%	0
5	5 Briarcliff Court	CapeCod	\$285000	\$278000	\$199200	6/22/2010	23	97.54%	1.4
6	180 Indiana Street	Colonial	\$299000	\$295000	\$154500	6/11/2010	105	98.66%	1.91
7	46 Van Ness Terrace	Colonial	\$308000	\$308000	\$155200	6/28/2010	17	100%	1.98
8	22 Burroughs Way	Custom	\$329000	\$230000	\$241900	6/7/2010	179	69.91%	0.95
9	398 Elmwood Avenue	Colonial	\$355000	\$350000	\$292300	6/4/2010	93	98.59%	1.2
10	71 Broadview Avenue	Colonial	\$399000	\$399000	\$174400	6/24/2010	7	100%	2.29
11	466 Ridgewood Road	Colonial	\$439000	\$383000	\$342400	6/22/2010	156	87.24%	1.12
12	36 Midland Boulevard	Colonial	\$450000	\$435000	\$264800	6/22/2010	16	96.67%	1.64
13	6 Harvard Avenue	SplitLev	\$485000	\$475000	\$277300	6/24/2010	24	97.94%	1.71
14	27 Broadview Avenue	Tudor	\$509000	\$495000	\$237200	6/24/2010	30	97.25%	2.09
15	33 Plymouth Avenue	Colonial	\$519000	\$505000	\$270700	6/14/2010	25	97.30%	0
16	25 North Terrace	Colonial	\$519000	\$519000	\$298000	6/11/2010	25	100%	1.74
17	99 Oakview Avenue	Colonial	\$529000	\$520000	\$317500	6/15/2010	14	98.30%	1.87
18	87 Plymouth Avenue	Colonial	\$529000	\$529000	\$296800	6/3/2010	13	100%	1.78
19	40 Kensington Terrace	Colonial	\$537000	\$520000	\$245100	6/11/2010	25	96.83%	1.64
20	81 Plymouth Avenue	Colonial	\$539000	\$520000	\$312000	6/1/2010	31	96.47%	2.12
21	18 Salter Place	Colonial	\$545000	\$540000	\$308900	6/16/2010	13	99.08%	1.67
22	448 Richmond Avenue	Custom	\$548000	\$545000	\$295900	6/11/2010	39	99.45%	1.75



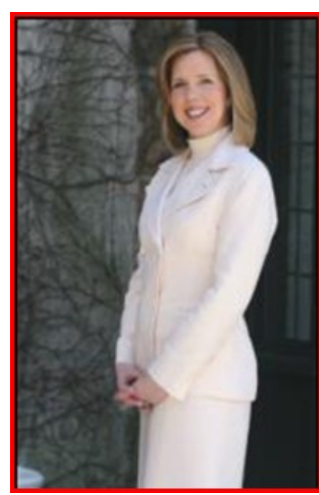
**The Maggee Miggin's Group**  
 973.376.8990-office  
 973.879.9711-cell  
[maggee@migginsrealestate.com](mailto:maggee@migginsrealestate.com)  
[www.maplewoodhousevalues.com](http://www.maplewoodhousevalues.com)  
*"Relax...You're with Maggee"*

Continued on the next page



# Maplewood **June 2010** Market Activity

Units	Address	Style	List Price	Sales Price	Total Assess	Close Date	DOM	LP:SP	SP:AV
23	56 Highland Avenue	Colonial	\$549000	\$549000	\$310400	6/16/2010	11	100.00%	1.84
24	451 Baldwin Road	Colonial	\$549000	\$529000	\$235500	6/18/2010	21	96.36%	1.77
25	36-38 Salter Place	Colonial	\$549900	\$540900	\$328600	6/21/2010	60	98%	2.25
26	50 Oakland Road	SplitLev	\$559000	\$567500	\$298700	6/24/2010	15	101.52%	1.65
27	7 Warren Road	Colonial	\$569000	\$564000	\$263000	6/24/2010	15	99.12%	1.9
28	45 Maplewood Avenue	Colonial	\$569000	\$580000	\$305600	6/11/2010	14	101.93%	1.62
29	13-15 Kendal Avenue	Colonial	\$569000	\$545000	\$336800	6/25/2010	29	96%	1.9
30	72 Oakland Road	Colonial	\$575000	\$572500	\$310300	6/25/2010	14	99.57%	2.14
31	549 Prospect Street	Colonial	\$579000	\$579000	\$299700	6/30/2010	10	100.00%	1.84
32	94 Oakview Avenue	Colonial	\$585000	\$577500	\$343900	6/23/2010	16	99%	1.68
33	11 Sunset Terrace	Colonial	\$589000	\$570000	\$312900	6/30/2010	16	96.77%	1.33
34	66 Claremont Avenue	Colonial	\$599000	\$575000	\$433300	6/25/2010	163	95.99%	1.64
35	6 South Crescent	Colonial	\$749900	\$720000	\$440300	6/28/2010	35	96.01%	1.78
36	2 Hemlock Court	Colonial	\$749900	\$749000	\$419900	6/7/2010	11	99.88%	1.58
37	477 Walton Road	Colonial	\$759000	\$745000	\$499800	6/30/2010	57	9816.00%	1.49
38	693 Valley Street	Colonial	\$775000	\$755000	\$479100	6/1/2010	97	97%	1.8
39	25 Ridgewood Terrace	Victrian	\$819000	\$800000	\$445000	6/11/2010	13	97.68%	1.43
40	608 Ridgewood Road	Colonial	\$839000	\$815000	\$570800	6/15/2010	29	97%	1.67
41	18 Tower Drive	Colonial	\$849000	\$875000	\$525300	6/8/2010	21	103.06%	1.67
42	26 Curtis Place	Colonial	\$1195000	\$1030000	\$581000	6/30/2010	53	86.19%	1.77
<b>AVERAGES</b>			<b>\$515115</b>	<b>\$502948</b>			<b>41</b>	<b>97.63%</b>	<b>1.63</b>



**The Maggee Miggin's Group**  
 973.376.8990-office  
 973.879.9711-cell  
[maggee@migginsrealestate.com](mailto:maggee@migginsrealestate.com)  
[www.maplewoodhousevalues.com](http://www.maplewoodhousevalues.com)  
*"Relax...You're with Maggee"*

<b>Average Days on Market</b>	<b>41</b>
<b>Average List Price</b>	<b>\$515,115</b>
<b>Average Sales Price</b>	<b>\$502,948</b>
<b>% of List Price to Sales Price</b>	<b>97.63%</b>
<b>Sales Price to Assessed Value Ratio</b>	<b>1.63</b>
<b># of Units for the Month</b>	<b>42</b>