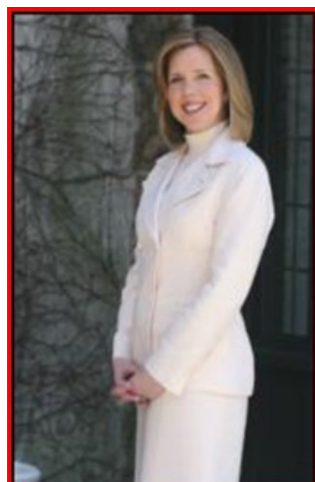




# Maplewood **November 2010** Market Activity

Know what your home is worth Visit [www.MaplewoodHouseValues.com](http://www.MaplewoodHouseValues.com)

Units	Address	Style	List Price	Sales Price	Total Assess	Close Date	DOM	LP:SP	SP:AV
1	45 Meadowbrook Place	TwEndUn	\$154,000	\$147,000	\$61,700	11/03/2010	106	95.45%	2.38
2	616 S Orange Ave 5M	OneFloor	\$199,000	\$190,000	\$237,300	11/19/2010	64	95.48%	0.80
3	64 Concord Avenue	Colonial	\$209,000	\$175,000	\$138,700	11/17/2010	116	83.73%	1.26
4	28 Hughes Street	Colonial	\$229,900	\$210,000	\$153,500	11/02/2010	73	91.34%	1.37
5	79 Rutgers Street	Colonial	\$299,900	\$270,000	\$172,100	11/19/2010	43	90.03%	1.57
6	414 Elmwood Avenue	Colonial	\$329,000	\$307,500	\$237,600	11/20/2010	147	93.47%	1.29
7	120 Midland Boulevard	Colonial	\$385,000	\$375,000	\$181,300	11/12/2010	31	97.40%	2.07
8	16 Evergreen Place	Colonial	\$459,000	\$385,000	\$336,900	11/04/2010	159	83.88%	1.14
9	576 Prospect Street	Colonial	\$469,997	\$390,000	\$502,300	11/19/2010	508	82.98%	0.78
10	616 W South Orange Avenue	HighRise	\$485,000	\$400,000	\$306,400	11/05/2010	10	82.47%	1.31
11	28 Burnett Terrace	Colonial	\$517,500	\$495,000	\$290,400	11/05/2010	27	95.65%	1.70
12	18 Harvard Avenue	Colonial	\$595,000	\$652,000	\$254,300	11/03/2010	9	109.58%	2.56
13	51 Plymouth Avenue	Colonial	\$599,000	\$547,000	\$301,100	11/12/2010	23	91.32%	1.52
14	35 Woodland Road	Colonial	\$745,000	\$710,000	\$434,100	11/19/2010	101	95.30%	1.64
15	10 Claremont Avenue	Colonial	\$949,000	\$855,000	\$520,000	11/05/2010	101	90.09%	1.53
<b>AVERAGES</b>			<b>\$441,686</b>	<b>\$407,233</b>			<b>101</b>	<b>92.20%</b>	<b>1.53</b>



**The Maggee Miggins Group**

973.376.8990 - Direct

973.879.9711- Cell

973.376.0033 x309 - Office

[maggee@migginsrealestate.com](mailto:maggee@migginsrealestate.com)

[www.MigginsRealEstate.com](http://www.MigginsRealEstate.com)

*"Relax... You're with Maggee"*

<b>Average Days on Market</b>	<b>101</b>
<b>Average List Price</b>	<b>\$441,686</b>
<b>Average Sales Price</b>	<b>\$407,233</b>
<b>% of List Price to Sales Price</b>	<b>92.20%</b>
<b>Sales Price to Assessed Value Ratio</b>	<b>1.53</b>
<b># of Units for the Month</b>	<b>15</b>