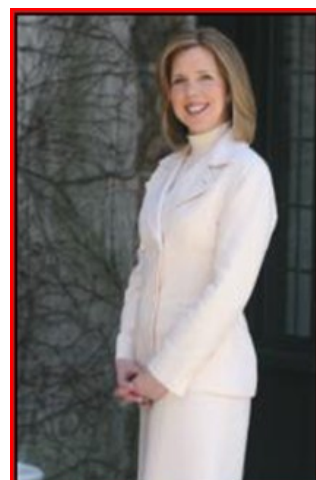




Mountainside **April 2010** Market Activity

Units	Address	Style	List Price	Sales Price	Total Assess	Close Date	DOM	LP:SP	SP:AV
1	1137 Saddlebrook Road	Bi-Level	\$520,000	\$438,750	\$151,800	4/23/2010	167	84.37%	2.89
AVERAGES			\$520,000	\$438,750			167	84.37%	2.89



The Maggee Miggin's Group
 973.376.8990-office
 973.879.9711-cell
maggee@migginsrealestate.com
www.maplewoodhousevalues.com
"Relax...You're with Maggee"

Average Days on Market	167
Average List Price	\$520,000
Average Sales Price	\$438,750
% of List Price to Sales Price	84.37%
Sales Price to Assessed Value Ratio	2.89
# of Units for the Month	1