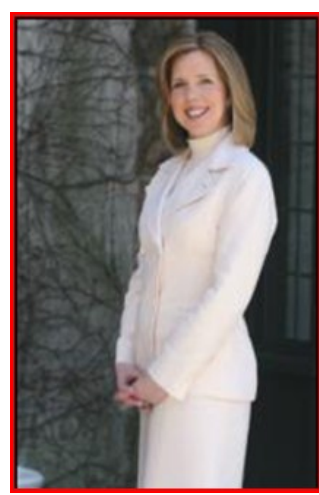




## Westfield **April 2010** Market Activity

Units	Address	Style	List Price	Sales Price	Total Assess	Close Date	DOM	LP:SP	SP:AV
1	1608 Central Avenue	SplitLev	\$374500	\$386500	\$128000	4/23/2010	113	103.20%	3.02
2	944 Beverly Drive	CapeCod	\$399900	\$399900	\$153200	4/19/2010	10	100%	2.61
3	927 Ripley Avenue	Colonial	\$400000	\$375000	\$124100	4/12/2010	66	93.75%	3.02
4	535 1st Street	Colonial	\$459000	\$470000	\$109400	4/23/2010	10	102.40%	4.3
5	224 Prospect Street	TwnIntUn	\$460000	\$460000	\$106000	4/9/2010	8	100%	4.34
6	417 Washington Street	Colonial	\$479500	\$487827	\$111000	4/14/2010	31	101.74%	4.39
7	260 Prospect Street	FirstFlr	\$529000	\$515000	\$154600	4/23/2010	323	97.35%	3.33
8	332 W Dudley Avenue	Colonial	\$549900	\$512500	\$146400	4/15/2010	177	93.20%	3.5
9	34 Genesee Trail	SplitLev	\$599000	\$599000	\$181200	4/16/2010	36	100%	3.31
10	717 Marcellus Drive	SplitLev	\$636000	\$650000	\$171700	4/27/2010	9	102.20%	3.79
11	722 Castleman Drive	Colonial	\$639900	\$639900	\$169400	4/30/2010	2	100%	3.78
12	722 Knollwood Terrace	Colonial	\$699900	\$685000	\$172000	4/1/2010	116	97.87%	3.98
13	32 Carol Road	SplitLev	\$729000	\$720000	\$239400	4/16/2010	40	98.77%	3.01
14	137 Elmer Street	Colonial	\$739000	\$667000	\$224300	4/6/2010	11	90.26%	2.97
15	857 Bradford Avenue	Colonial	\$1175000	\$1095000	\$290500	4/30/2010	57	93.19%	3.77
16	837 Ramapo Way	Custom	\$1849000	\$1800000	\$672400	4/9/2010	105	97.35%	2.68
17	953 Wyandotte Trail	Colonial	\$2755000	\$2500000	\$0	4/9/2010	54	90.74%	0
<b>AVERAGES</b>			<b>\$792564</b>	<b>\$762507</b>			<b>69</b>	<b>96.20%</b>	<b>3.28</b>



**The Maggee Miggin's Group**  
 973.376.8990-office  
 973.879.9711-cell  
[maggee@migginsrealestate.com](mailto:maggee@migginsrealestate.com)  
[www.maplewoodhousevalues.com](http://www.maplewoodhousevalues.com)  
*"Relax...You're with Maggee"*

<b>Average Days on Market</b>	<b>69</b>
<b>Average List Price</b>	<b>\$792,564</b>
<b>Average Sales Price</b>	<b>\$762,506</b>
<b>% of List Price to Sales Price</b>	<b>96.20%</b>
<b>Sales Price to Assessed Value Ratio</b>	<b>3.28</b>
<b># of Units for the Month</b>	<b>17</b>